



---

# DEEPIKA

# ENGINEERING

---

**AN ISO 9001 : 2015 CERTIFIED CO.**

---

**HEAD OFFICE & PLANT : 337, HORIZON  
INDUSTRIAL PARK, NR BAMANGAM, N  
H 48, VADODARA(391243), GUJARAT,  
INDIA.**

---

**Mob : 9099603201, 9898564706**

**Email : [deepikaengg108@gmail.com](mailto:deepikaengg108@gmail.com)**

**[info@deepikaengineering.com](mailto:info@deepikaengineering.com)**

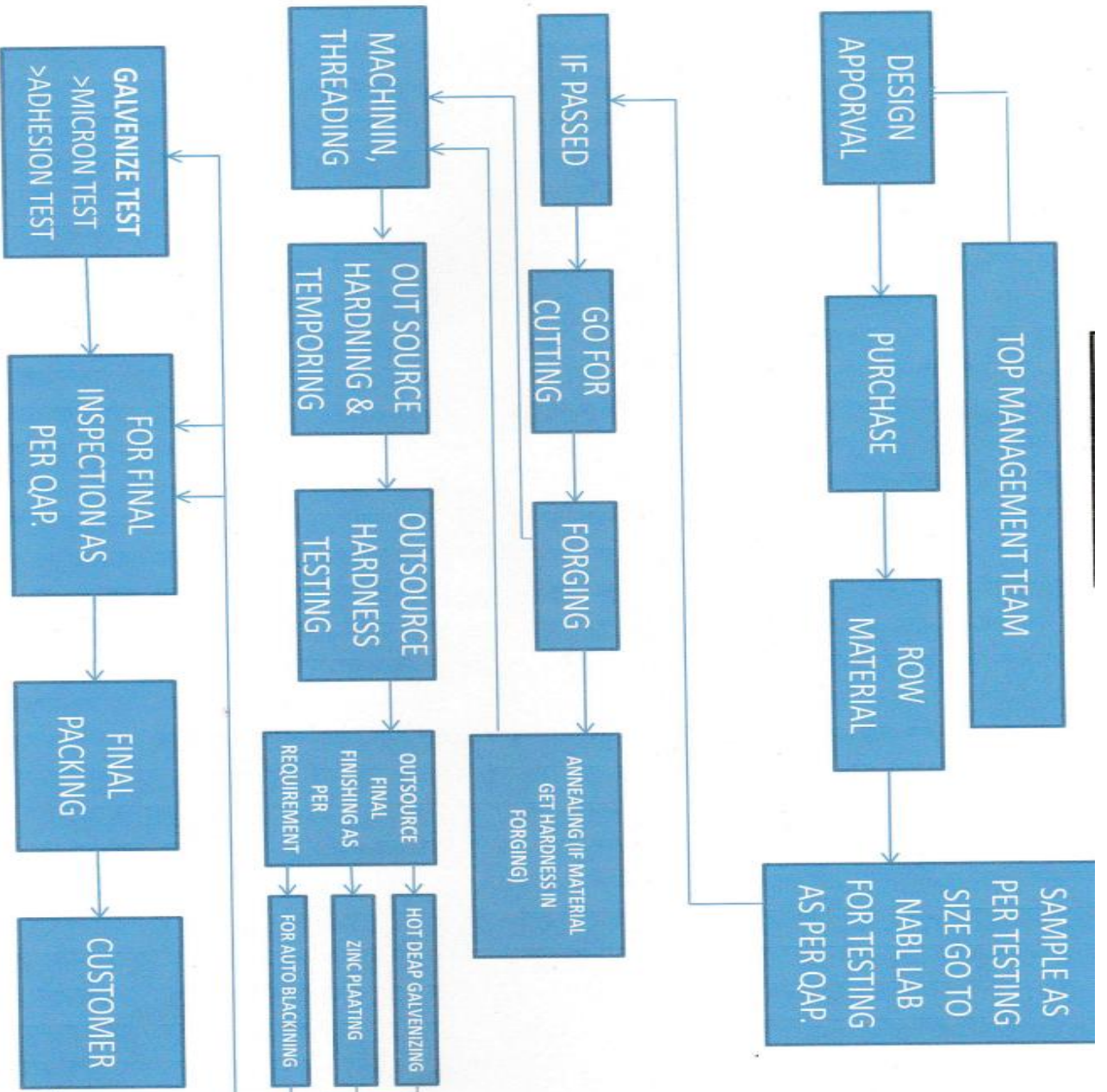
**WEB : [www.deepikaengineering.com](http://www.deepikaengineering.com)**

---

**• QUALITY, COMMITMENT, EXCELLENCE**



<p><b>All Types Of Bolts and Nuts.</b></p> <ul style="list-style-type: none"> <li>❖ Hex Bolt</li> <li>❖ Eye Bolt</li> <li>❖ Allen Bolt</li> <li>❖ CSK Bolts</li> <li>❖ Jeck Screw Bolts</li> </ul>				
<p><b>All Types Of Nuts</b></p> <ul style="list-style-type: none"> <li>❖ Hex Nut</li> <li>❖ Heavy Hex Nut</li> <li>❖ Lock Nut</li> <li>❖ Cap Nut</li> <li>❖ Cuppling Nut</li> <li>❖ Slotted Nut</li> <li>❖ Flange Nut</li> <li>❖ Square Nut</li> </ul>				
				
<p><b>All Types Of</b></p> <ul style="list-style-type: none"> <li>❖ U-Bolt</li> <li>❖ Foundation Bolt</li> <li>❖ J &amp; L Bolt</li> <li>❖ Hook Bend</li> </ul>				



## MANUFACTURING GRADES :

CARBON  
STEEL

IS 2062, 1018, 4.6, 5.6, 5.8 ETC.

ALLOY  
STEEL

CL 8.8, 10.9, 12.9, ASTM GR B7, 2H,  
B16, L7, GR 7 ETC.

STAINLESS  
STEEL

304,316,310,321,410,202,317L, MONEL,  
ENCONEL, NICKEL ETC.

### CAPACITY

BOLTS & NUTS : M6 TO M76, NUT M6 TO M80,

U BOLTS : M6 TO M80, PIPE SIZE - 15NB TO 900NB

FOUNDATION BOLTS : M6 TO M80 (THREADING BENDING (HOT & COLD) WELDING)

STUD : FULL THREADED HAL THREADED M6 TO M110 (6 METER LONG MAX. LENGTH)





**U BOLT WITH GI**



**U BOLT WITH SLEEVE TEFLON TYPE**



**U BOLT WITH HDG**



**ANCHOR BOLT WITH SLEEVE**



**ANCHOR BOLTS GULI TYPE**



**VARIOUS TYPES OF ANCHOR BOLTS**



**SHOE CLAMPS WITH BEAM**



**PIPE CLAMPS WITH GASKET**



**FLAT FULL CLAMPS**

**We provide optimal solutions, as well as products and services that meet the needs of a wide range of industrial fields.**

**\*CHEMICAL INDUSTRIES**

**\*OIL REFINING AND PETROCHEMICAL**

**\*PHARMASUTICALS**

**\*AUTOMOBILE INDUSTRY**

**\*CONSTRUCTION**

**\*ELECTRIC POWER & GAS.**

**\*INFRASTRUCTURES**

**\*SOLAR PLANTS.**

## **OUR VALUABLE CLIENTS**

**\*LARSEN & TOUBRO LTD.**

**\* BHARAT HEAVY ELECTRICAL LTD.**

**\*POWERGRID CORPORATION INDIA LTD.**

**\*THYSSENKRUPP INDUSTRIAL SOLUTIONS (INDIA) PVT LTD**

**\*GIPCL**

**\*CINDA ENGINEERING & CONSTRUCTION LTD.**

**\*N R AGRWAL INSUTRIES LTD.**

**\*CRYOGAS EQUIPMENTS PVT LTD.**

**\*LISEGA INDIA PVT LTD.**

**\*NTC LOGISTICS LTD.**

**\*DIAMINES & CHEMICALS LTD.**